

Nice & Easy

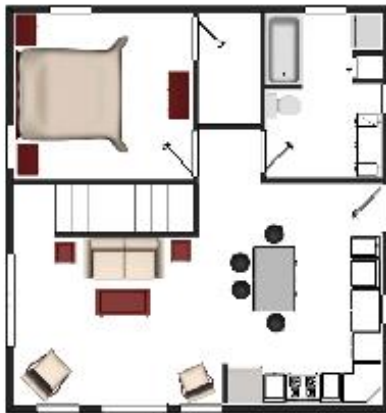


*This beautiful home comes equipped with everything you need and can be completed in three months! Pricing begins @ \$117,000**

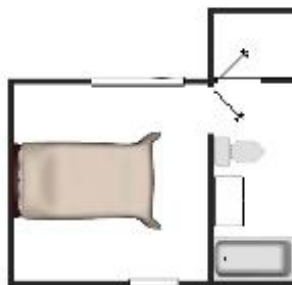
Main floor: 768 Sq. Ft.

Upper Floor: 232 Sq. Ft.

Total Living: 1000 Sq. Ft.



Main Floor



Optional Loft

- 2 Bedrooms / 2 bath option
- Tongue & Groove ceilings
- Fireplace (optional stone work)
- Hardwood & Ceramic Tile Floors
- Laundry in oversize bath
- Log or Vinyl shake siding
-



Tom Allison, Owner

828 390 0648

taphomesnc@aol.com

**Price does not include lot, deck, foundation or utility costs.*

EVERGREEN



A small home plan with everything.
Easily modified for custom features.
Works well for modular construction.
Economical to build and maintain.



Tom Allison Cell: 828 390 0648

tomallisonproperties.com



River View



An affordable home plan packed with features perfect for a mountain getaway or a starter home for a young family. This plan can easily be expanded by adding a third bedroom suite, attached garage or shop, and a finished basement, all at a price that will fit your budget! We have home lots available or will be happy to build on your site.

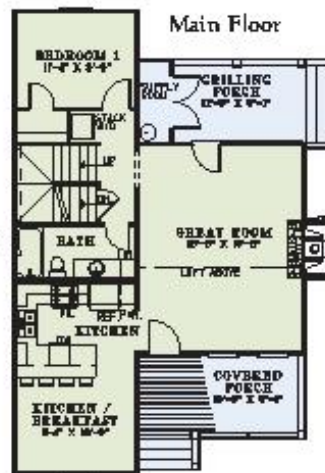
Floor Plan Specifications

Width: 30' 4"
 Depth: 44' 6"
 Main Floor: 859 sq. ft.
 Upper Floor: 319 sq. ft.
 Total Living: 1,178 sq. ft.
 Main Ceiling: 8 ft.
 Upper Floor: 8 ft.

- Entry porch to Great room with open ceiling to loft above and fireplace
- Kitchen with eat at bar
- Stacked washer/dryer
- Rear grilling porch with supply room
- Upper: Loft/Bedroom 2 with own bath



1243 Elk Park Hwy.
 Newland, NC 28657
 828-733-3767
www.TapHomesandPools.com



Designed by
Nelson Design Group
 ARCHITECTURAL PLANS & DESIGN
 6545-Anc Highway, LLC
www.nelsondesigngroup.com
 800.590.2423

Note: Rendering is a artist's interpretation of this home and does not necessarily represent floor plans. Please refer to actual floor plans for more details.

Mountain Cabin

